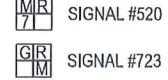


- NOTES:
 1. ALL DIMENSIONS IN METRES
 2. SIDING DIMENSIONS INDICATE STANDING ROOM
 3. THEATRE ROUTE INDICATORS SHOWN THUS:



Wayne Walsh
 WAYNE WALSH
 HEAD OF OPERATIONAL RAIL SAFETY
 METRO TRAINS MELBOURNE

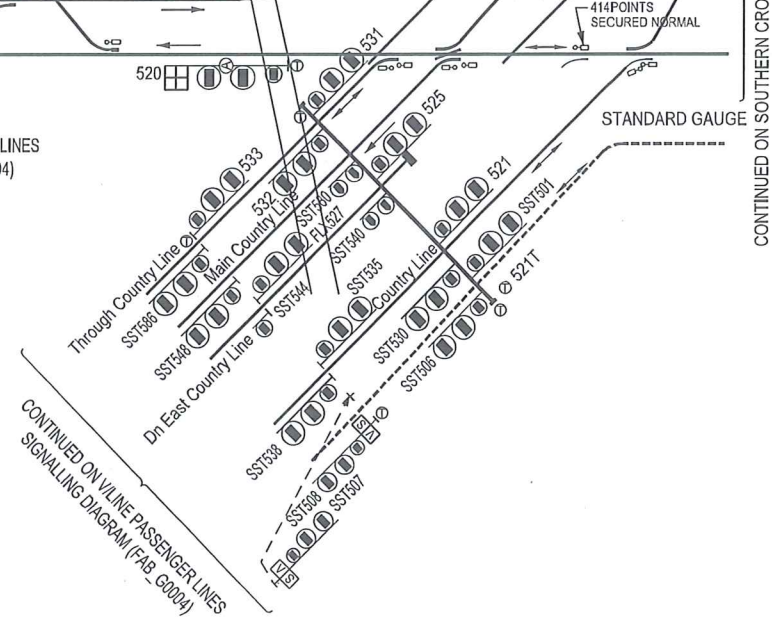


Rupert Capper
 RUPERT CAPPER
 MANAGER - SYSTEMS & SAFEWORING
 V/LINE
 16th DECEMBER 2017

SOUTHERN CROSS MTM PASSENGER LINES SIGNALLING DIAGRAM No: 88/13

SUPERSEDES 71/13

Showing Signal and Interlocking Arrangements to come into use on a date to be fixed by circular which will be jointly issued by the Head of Operational Rail Safety (Metro Trains Melbourne) and the Manager - Systems & Safeworking (V/Line)



CONTINUED ON FLINDERS ST (WEST) PASSENGER LINES SIGNALLING DIAGRAM (FSS_G0001)

CONTINUED ON MELBOURNE YARD - WEST TOWER SIGNALLING DIAGRAM (WST_G0005)

CONTINUED ON SOUTHERN CROSS - NORTH MELBOURNE PASSENGER LINES SIGNALLING DIAGRAM (FAB_G0002)

CONTINUED ON V/LINE PASSENGER LINES SIGNALLING DIAGRAM (FAB G0004)

CONTINUED ON V/LINE PASSENGER LINES SIGNALLING DIAGRAM (FAB_G0004)