



Note: All dimensions in metres.  
 Giving dimensions both at starting and  
 clear of crossing/signal track.

Point (tip box shown thus:   
 Timer boards shown thus:   
 HS indicates high speed points

# LITTLE RIVER - CORIO

## SIGNALLING DIAGRAM No. 62/09

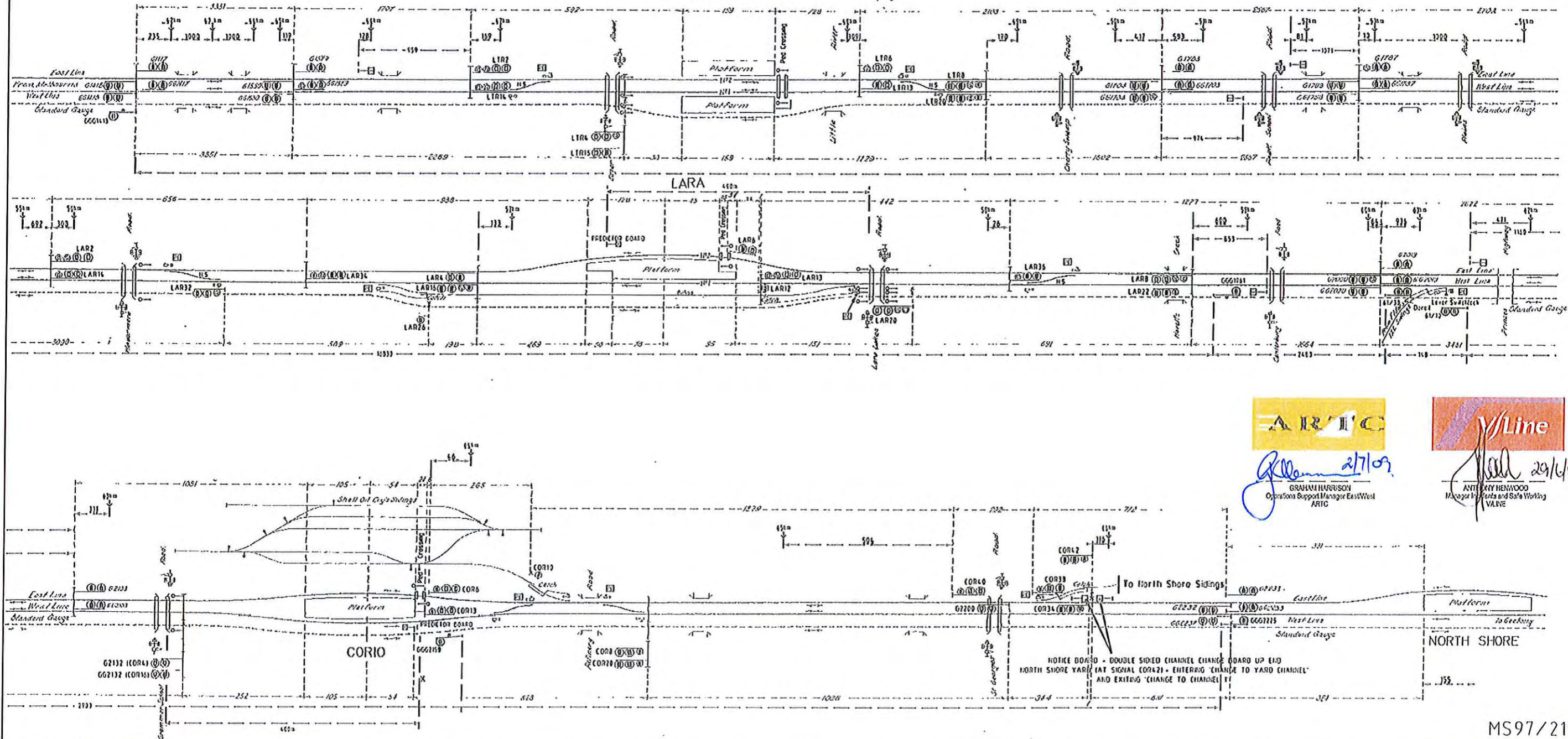
Showing Signal and Interlocking Arrangements to come into use  
 on a date on to be fixed by a circular which will be issued by:-  
 The Manager, Incidents and Safeworking - V/Line,  
 and the Operations Support Manager - ARTC.

### LITTLE RIVER

### LARA

### CORIO

### NORTH SHORE



**ARTC**  
 GRAHAM HARRISON  
 Operations Support Manager East/West  
 ARTC  
 2/7/09

**V/Line**  
 ANNE HENWOOD  
 Manager Incidents and Safeworking  
 V/Line  
 29/4/09

NOTICE BOARD - DOUBLE SIDED CHANGE BOARD UP (I/D)  
 NORTH SHORE YARD (AT SIGNAL COR42) - ENTERING 'CHANGE TO YARD CHANNEL'  
 AND EXITING 'CHANGE TO CHANNEL' IT